



**ALTECH VALVES**  
HIGH QUALITY



# ALTECH VALVES INDUSTRIES

Manufacturer and Exporter  
Of Forged Brass Ball Valve,  
Gate Valve, Check Valve, Gas  
Valve, Angle Valve, RO Valve,  
Non Return Valve, Hex Nipple,  
Hex Reducing Nipple, Hex ,  
Hex Reducing Bush, Brass  
Nipple, West coupling



[www.altechvalves.com](http://www.altechvalves.com)



+91 92745 73796  
+91 99254 73796



[info@altechvalves.com](mailto:info@altechvalves.com)  
[sales@altechvalves.com](mailto:sales@altechvalves.com)





**ALTECH VALVES**  
HIGH QUALITY



## Company Profile

# Altech Valves Industries

Altech Valves is a trusted manufacturer and supplier of premium-quality brass valves and fittings, serving domestic and international markets with excellence. With years of experience in precision engineering, we specialize in producing durable, safe, and reliable products designed to meet the highest global standards.

### Our Mission

To deliver innovative, high-performance valve solutions that ensure safety, reliability, and long-lasting value for our customers across residential, commercial, and industrial sectors.

### Our Vision

To be a globally recognized brand in the valve industry, known for quality, integrity, and customer satisfaction.

### Quality Assurance

Every Altech product is manufactured from certified low-lead brass (CW 617N) and undergoes rigorous quality checks to ensure:

- Compliance with international safety and performance standards
- Superior resistance to corrosion and scaling
- Long service life with minimal maintenance
- Leak-proof, precision-engineered designs

### Why Choose Altech Valves?

- Safe for drinking water applications
- Manufactured with advanced technology and skilled craftsmanship
- Easy installation with standard pipe threads
- Strong after-sales support and customer care
- Competitive pricing with uncompromised quality

### Global Reach & Commitment to Innovation

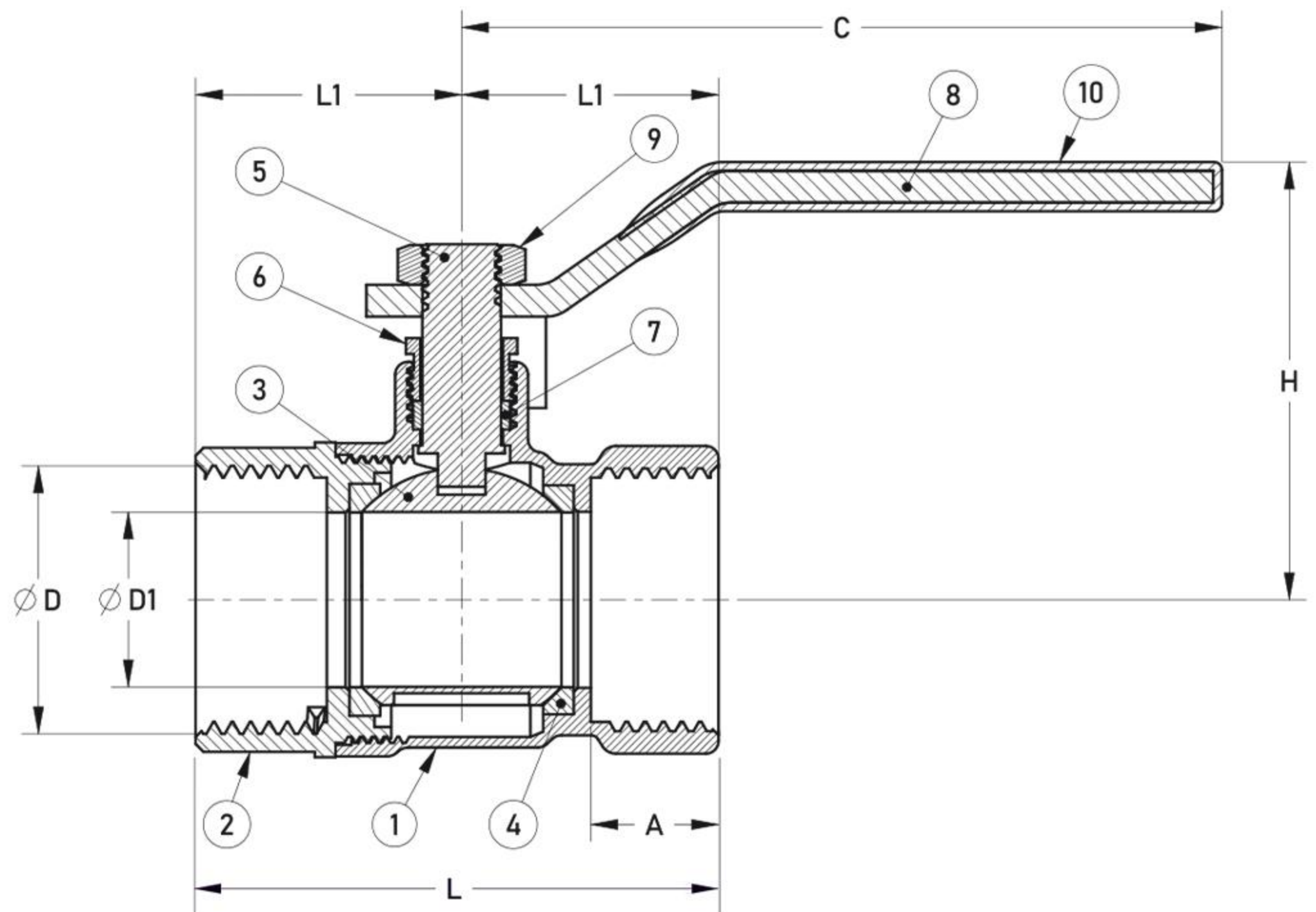
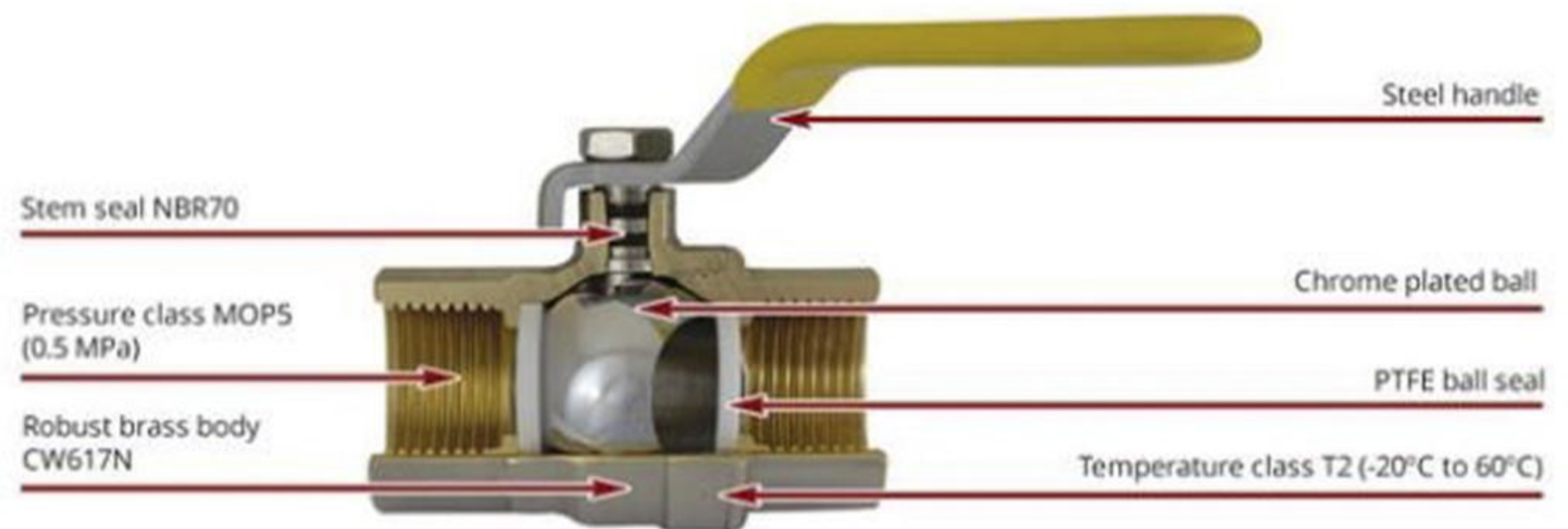
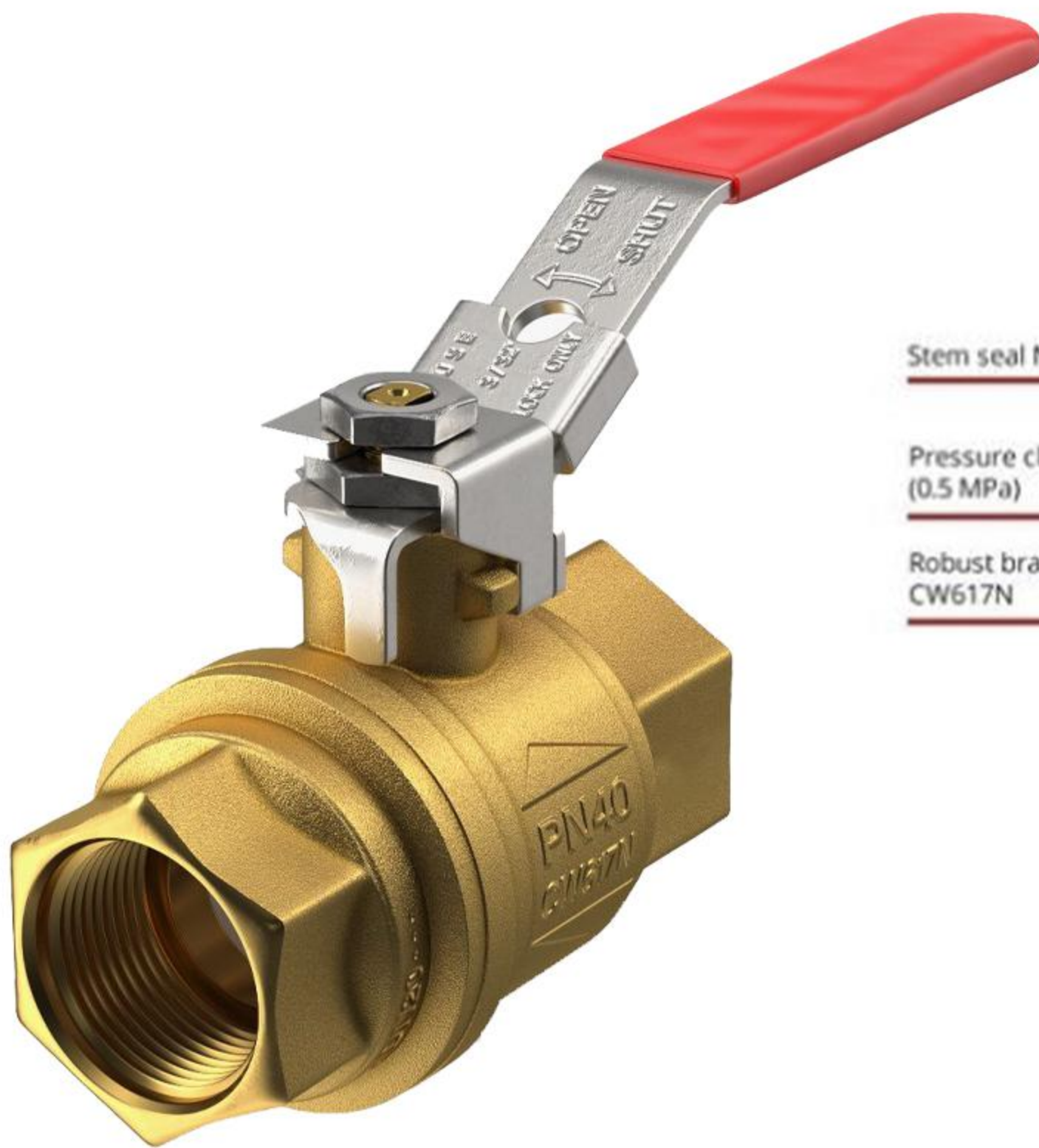
With a growing presence in both domestic and international markets, Altech Valves is committed to building long-term partnerships with distributors, wholesalers, and industrial clients worldwide. We continuously invest in modern machinery, R&D, and quality management systems to deliver products that not only meet today's requirements but also anticipate tomorrow's needs.



# Brass Ball Valve



**ALTECH VALVES**  
HIGH QUALITY



Altech Valves are made from safe, low-lead brass (CW 617N), making them ideal for drinking water. They resist rust and corrosion, even with hard water, and are designed to prevent leaks at low pressure. With standard pipe threads, they're simple to install and replace.

## Features:

1. Full Brass Forged Body
2. Chrome Finished CNC Machining
3. Dacromet coated steel handle
4. Both End threads – BSP to ISO 228

## Testing & Pressure – Hydrostatic:

1. Shell : 25 kg/ cm<sup>2</sup> g
2. Seat : 16 kg/ cm<sup>2</sup> g
3. Temperature working :  
- 30 ° C to 220 ° C
4. Application :  
Air, Water, Oil and Other Fluid



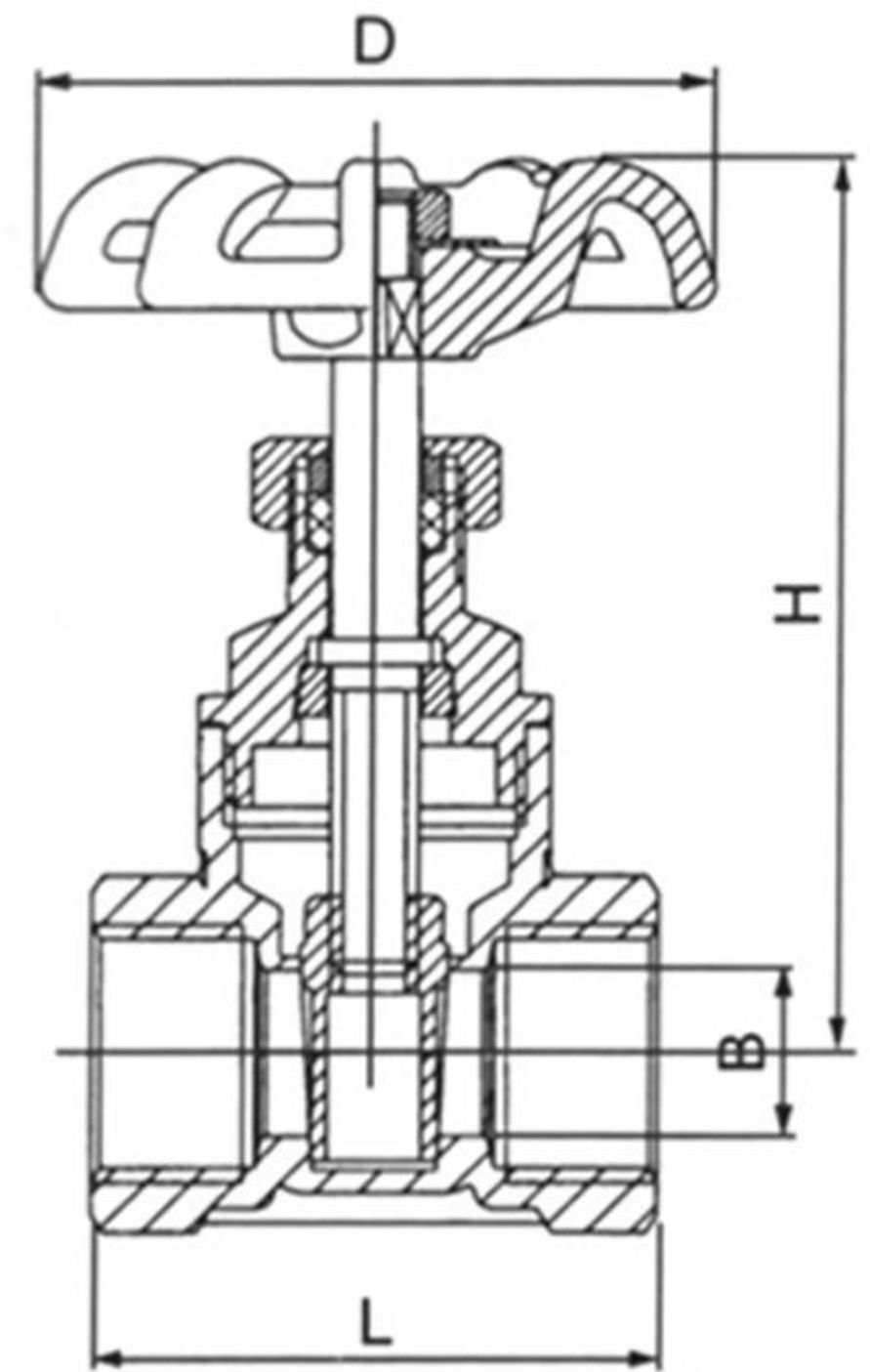
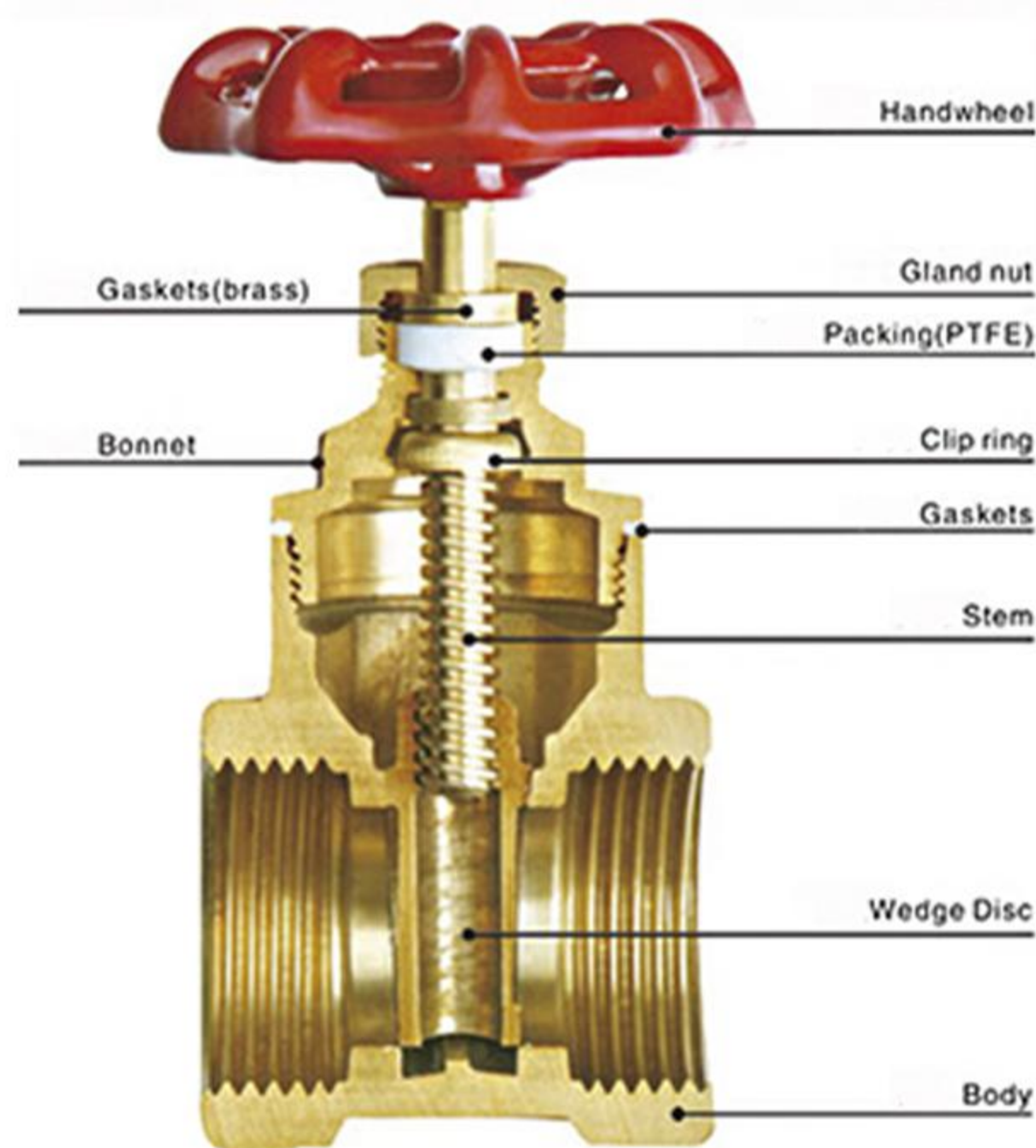
Scan To View  
More Details Of  
Brass Ball Valve



# Brass Gate Valve



**ALTECH VALVES**  
HIGH QUALITY



Altech Brass Gate Valves are built from durable low-lead brass (CW 614N) for safe use with drinking water. They deliver long-lasting corrosion resistance, smooth flow control, and a leak-proof seal. Easy to fit with standard pipes, they're a reliable choice for residential, commercial, and industrial use.

## Features:

1. Full Brass Forged Body
2. Screwed Female Ends To IS 554 / BS 21 / IS 07
3. Permits Flow In One Direction & Shuts Automatically If The Flow Reverses
4. Swing Type

## Testing & Pressure – Hydrostatic:

1. Shell : 25 kg/CM<sup>2</sup>g (350 psig)
2. Seat : 16 kg/CM<sup>2</sup>g (225 psig)
3. Temperature working :  
– 30 ° C to 220 ° C
4. Application :  
Air, Water, Oil and Other Fluid



## Sizes / Dimensions:

- AVG 01 : ½" (15mm)  
AVG 02 : ¾" (20mm)  
AVG 03 : 1" (25mm)  
AVG 04 : 1 ¼" (32mm)  
AVG 05 : 1 ½" (40mm)  
AVG 06 : 2 (50mm)



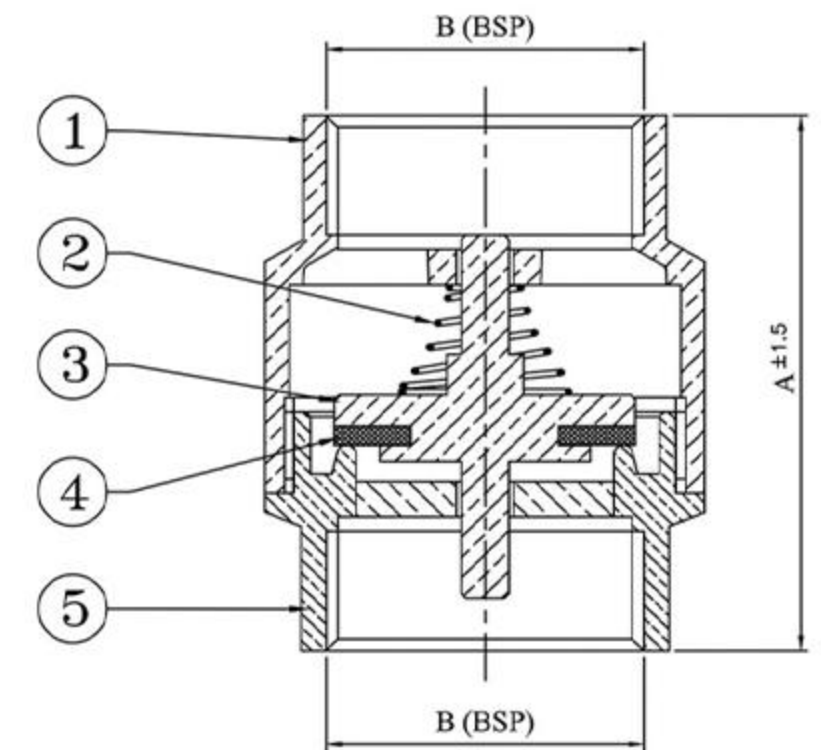
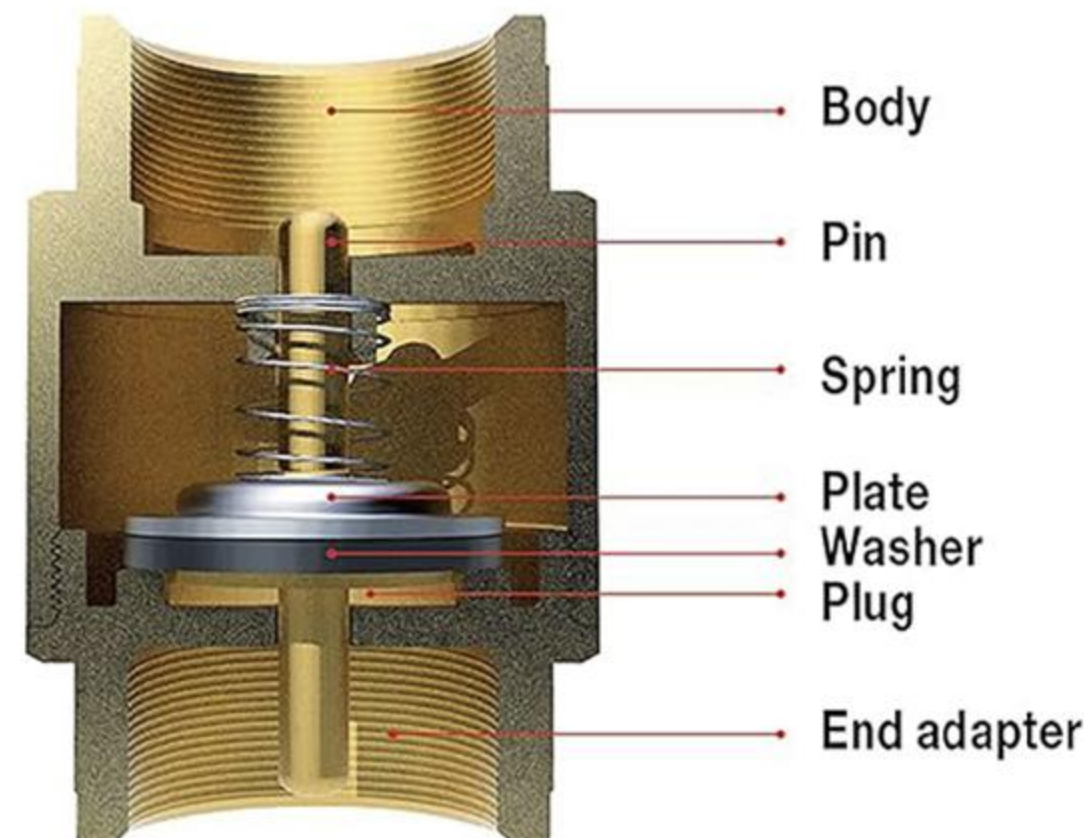
Scan To View More Details Of  
Brass Gate Valve



# Brass Check Valve



**ALTECH VALVES**  
HIGH QUALITY

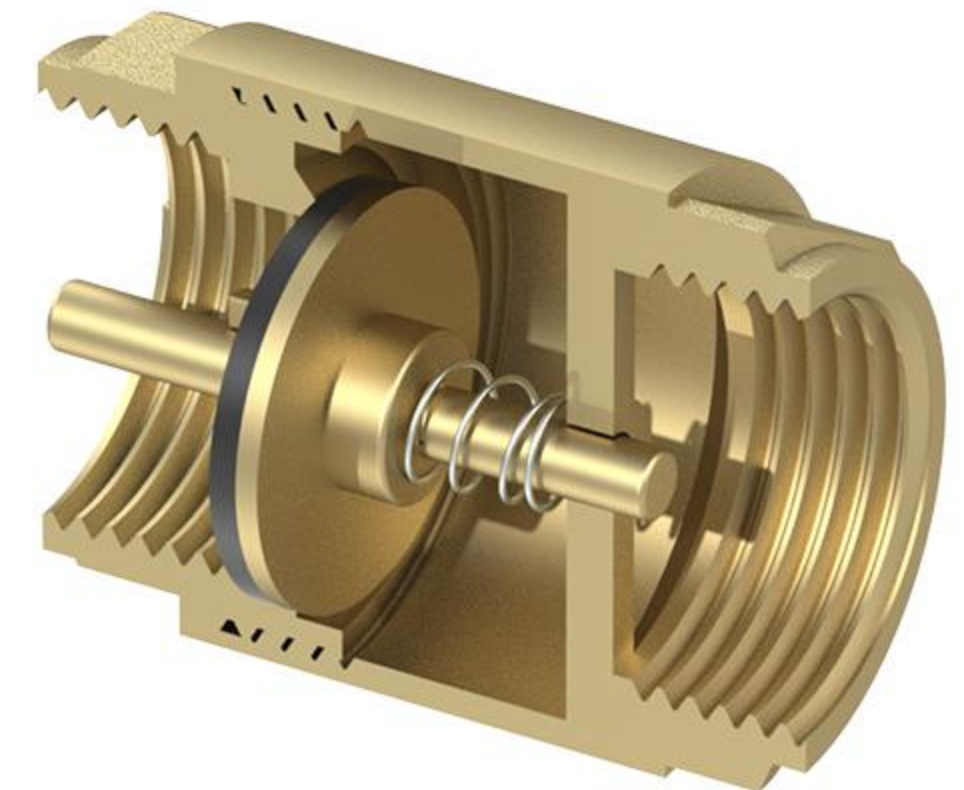
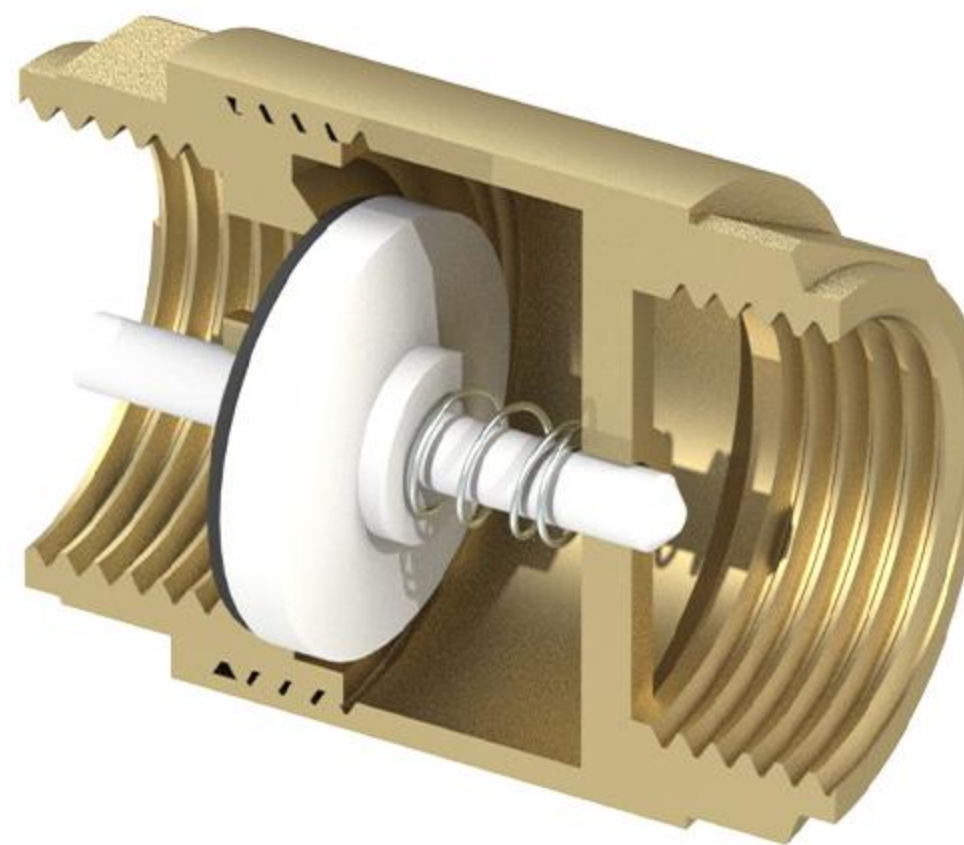


Altech Brass Spring Check Valves are manufactured from high-quality, low-lead brass (CW 617N), making them suitable for potable water systems. The built-in spring mechanism ensures reliable backflow prevention and smooth operation in both horizontal and vertical installations. These valves provide excellent resistance to corrosion in hard water applications, feature precision-machined threads for a secure fit, and are designed for long service life with minimal maintenance.



## Testing & Pressure – Hydrostatic:

1. Shell : 25 kg/CM<sup>2</sup>g (350 psig)
2. Seat : 16 kg/CM<sup>2</sup>g (225 psig)
3. Temperature working :  
– 30 ° C to 220 ° C
4. Application :  
Air, Water, Oil and Other Fluid



## Sizes / Dimensions:

- AVG 01 : ½" (15mm)  
AVG 02 : ¾" (20mm)  
AVG 03 : 1" (25mm)  
AVG 04 : 1 ¼" (32mm)  
AVG 05 : 1 ½" (40mm)  
AVG 06 : 2" (50mm)



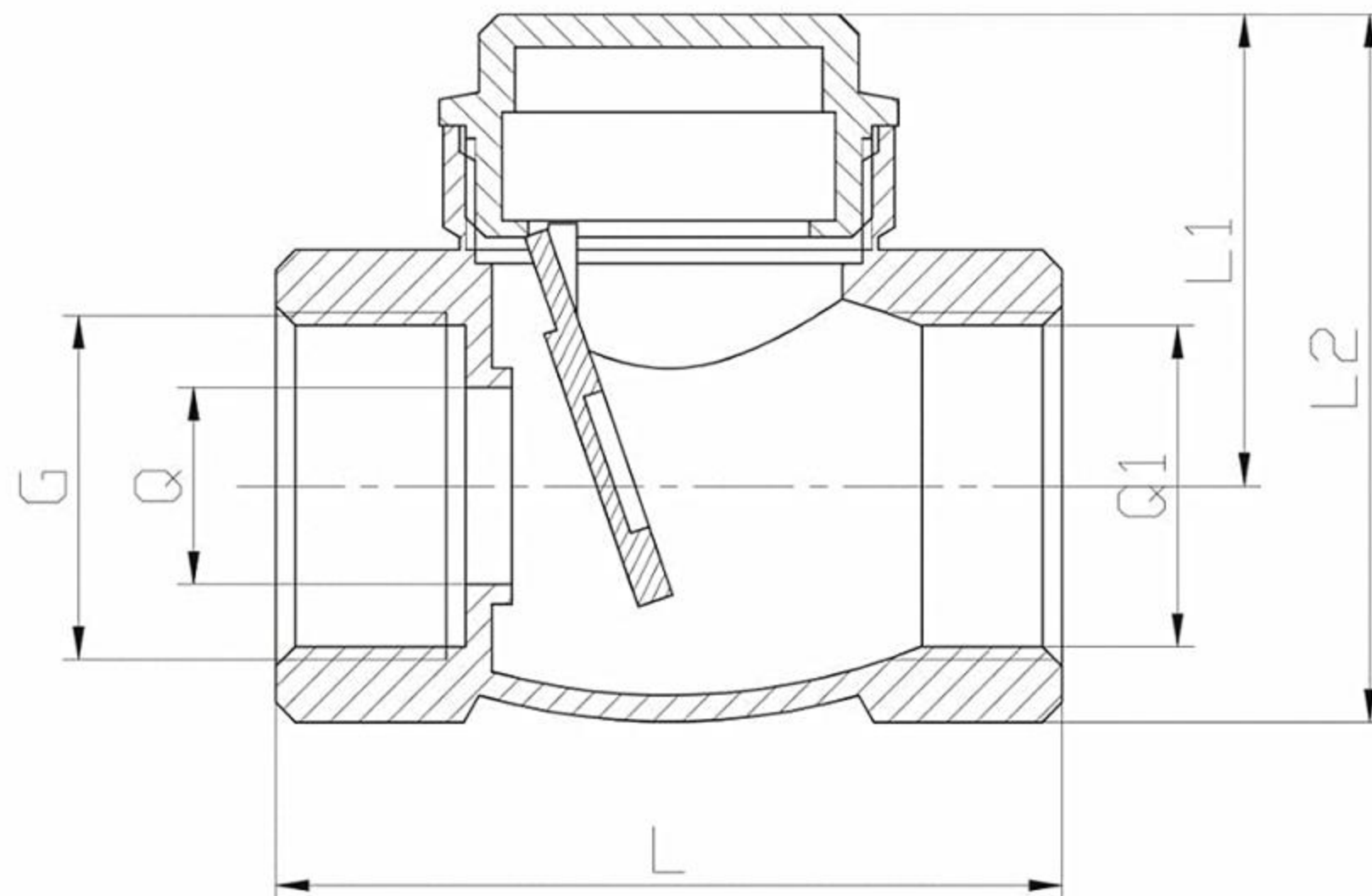
Scan To View More Details Of  
Brass Check Valve



# Brass Non Return Valve (NRV)



**ALTECH VALVES**  
HIGH QUALITY



Altech Brass Spring Check Valves are manufactured from high-quality, low-lead brass (CW 617N), making them suitable for potable water systems. The built-in spring mechanism ensures reliable backflow prevention and smooth operation in both horizontal and vertical installations.

These valves provide excellent resistance to corrosion in hard water applications, feature precision-machined threads for a secure fit, and are designed for long service life with minimal maintenance.

## Sizes / Dimensions:

- AVG 01** : ½" (15mm)
- AVG 02** : ¾" (20mm)
- AVG 03** : 1" (25mm)
- AVG 04** : 1 ¼" (32mm)
- AVG 05** : 1 ½" (40mm)
- AVG 06** : 2" (50mm)



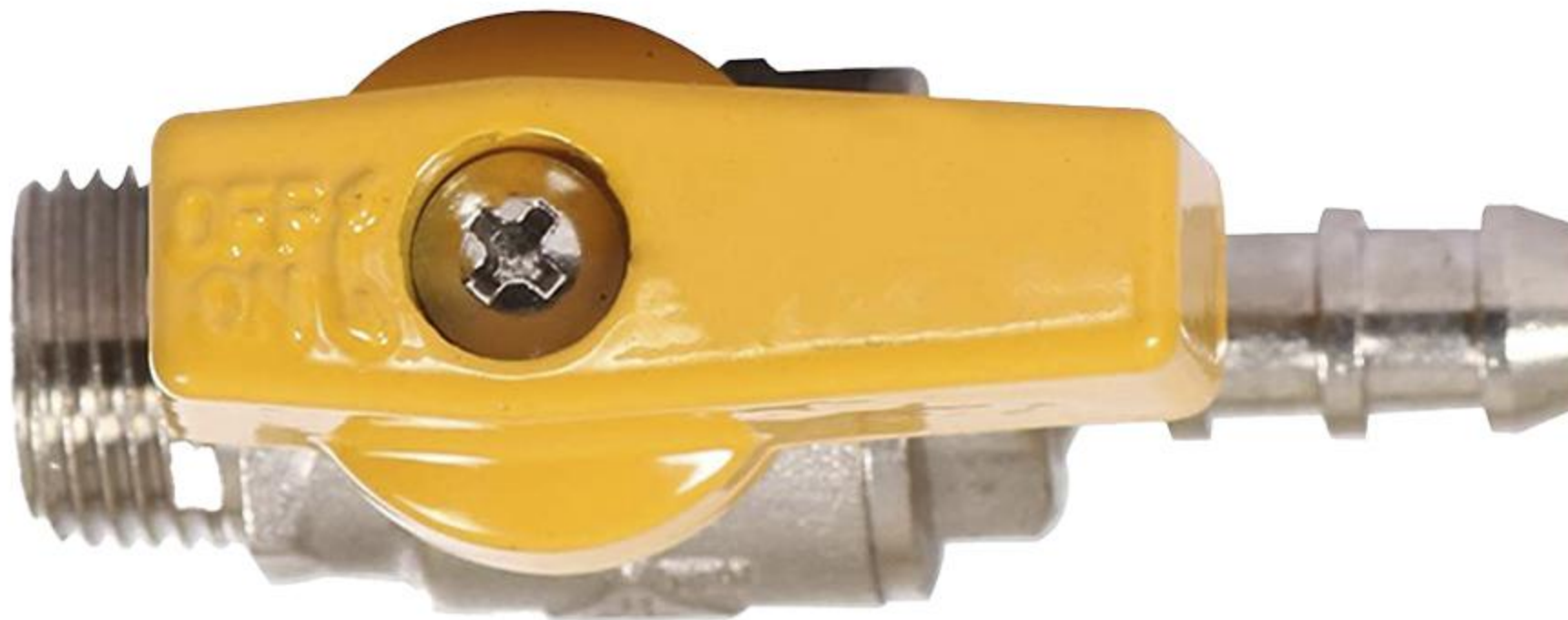
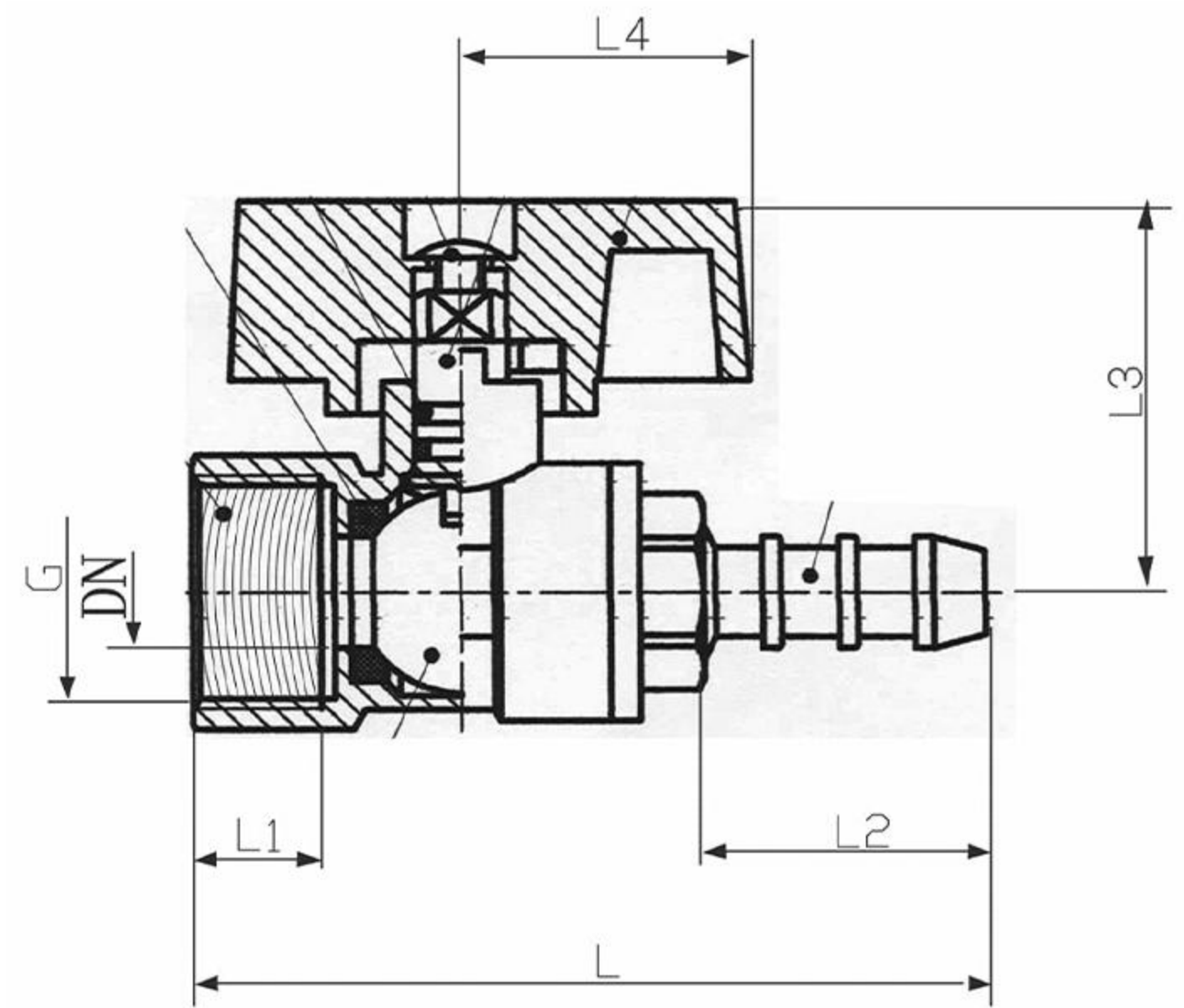
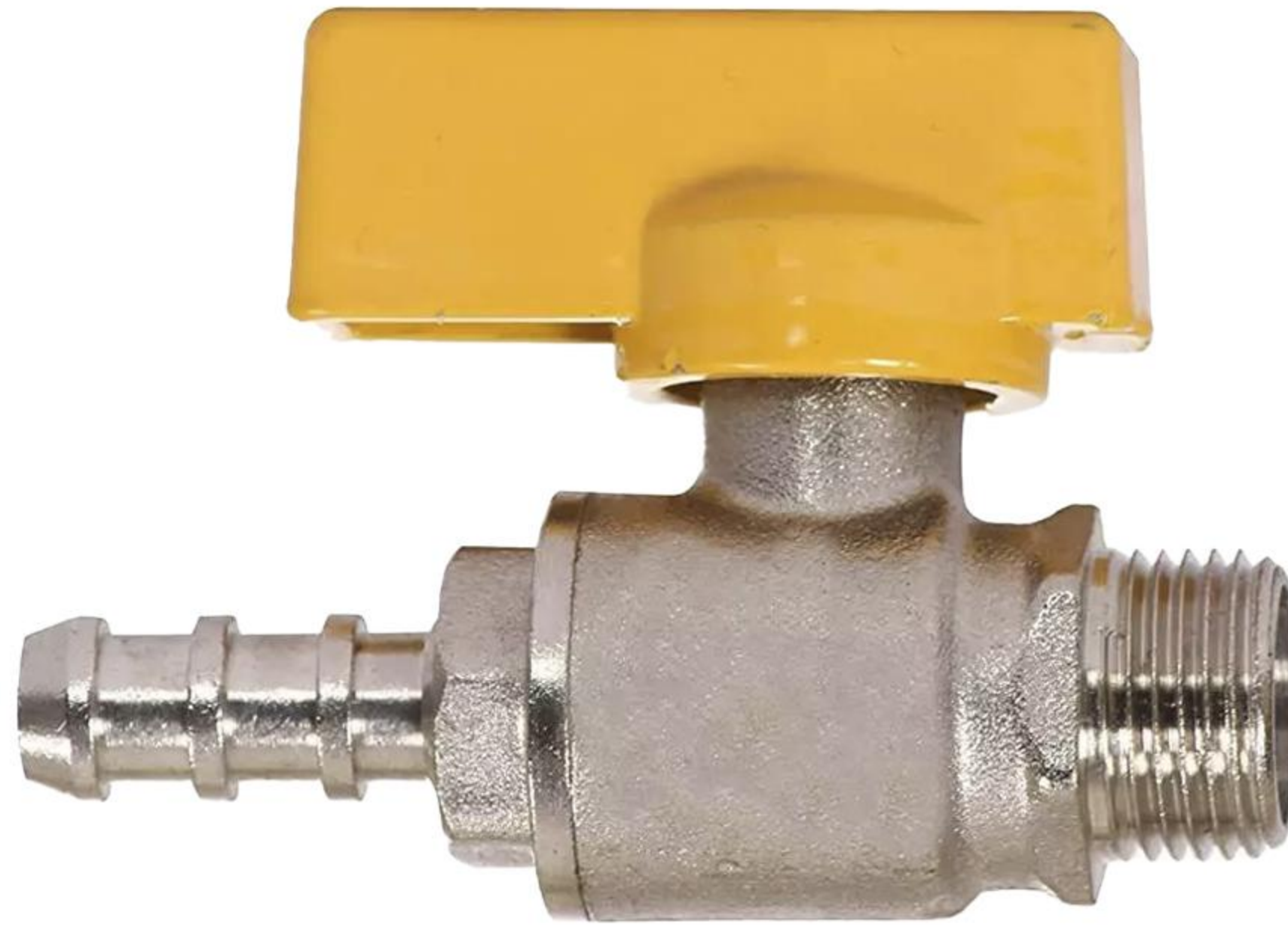
Scan To View More Details Of  
Brass Check Valve



# Brass Gas Valve



**ALTECH VALVES**  
HIGH QUALITY



Altech Brass Gas Valves are manufactured from premium low-lead brass (CW617N), ensuring safety, durability, and corrosion resistance even in harsh environments. Engineered for precise gas flow control, these valves provide leak-proof performance, smooth operation, and long service life.

Ideal for residential, commercial, and industrial applications, they are compatible with standard pipe fittings and designed for easy installation and maintenance. With rigorous quality testing and compliance with safety standards, Altech Brass Gas Valves guarantee reliability and peace of mind for all gas handling requirements.

## Material Used:

Nozzle, Body, Ball	: Brass CW 614N
Handle Nut	: MS
Handle	: Alluminium Alloy
Seal Ring	: PTFE

## Sizes / Dimensions:

1/4", 3/8", 1/2"



Scan To View More Details Of  
Brass Gas Valve



# Brass RO Valve



**ALTECH VALVES**  
HIGH QUALITY



Altech Brass RO Valves combine premium quality with superior reliability for your reverse osmosis systems. Crafted from high-grade low-lead brass (CW617N), these valves ensure safe, pure water flow while resisting corrosion and wear.

Engineered for smooth, leak-free operation, they are easy to install and maintain, fitting seamlessly with standard RO piping. Perfect for homes, offices, and commercial setups, Altech Brass RO Valves deliver consistent performance, safeguarding both your system and your health with every drop.

## Material Used:

Nozzle, Body, Ball	: Brass CW 614N
Handle Nut	: MS
Handle	: Alluminium Alloy
Seal Ring	: PTFE

## Size:

**1/2" & 3/8"**



Scan To View More Details Of  
Brass RO Valve



## Brass Nipple



**Size:**

1", 1 1/2", 2", 2 1/2", 3", 4", 6"



**ALTECH VALVES**  
HIGH QUALITY

## Brass Tee



**Size:**

1/2", 3/4"

## Brass HEX Nipple



**Size:**

1/2" x 1/2", 3/4" x 3/4", 1" x 1",  
1.1/4" x 1.1/4", 1.1/2" x 1.1/2", 2" x 2"

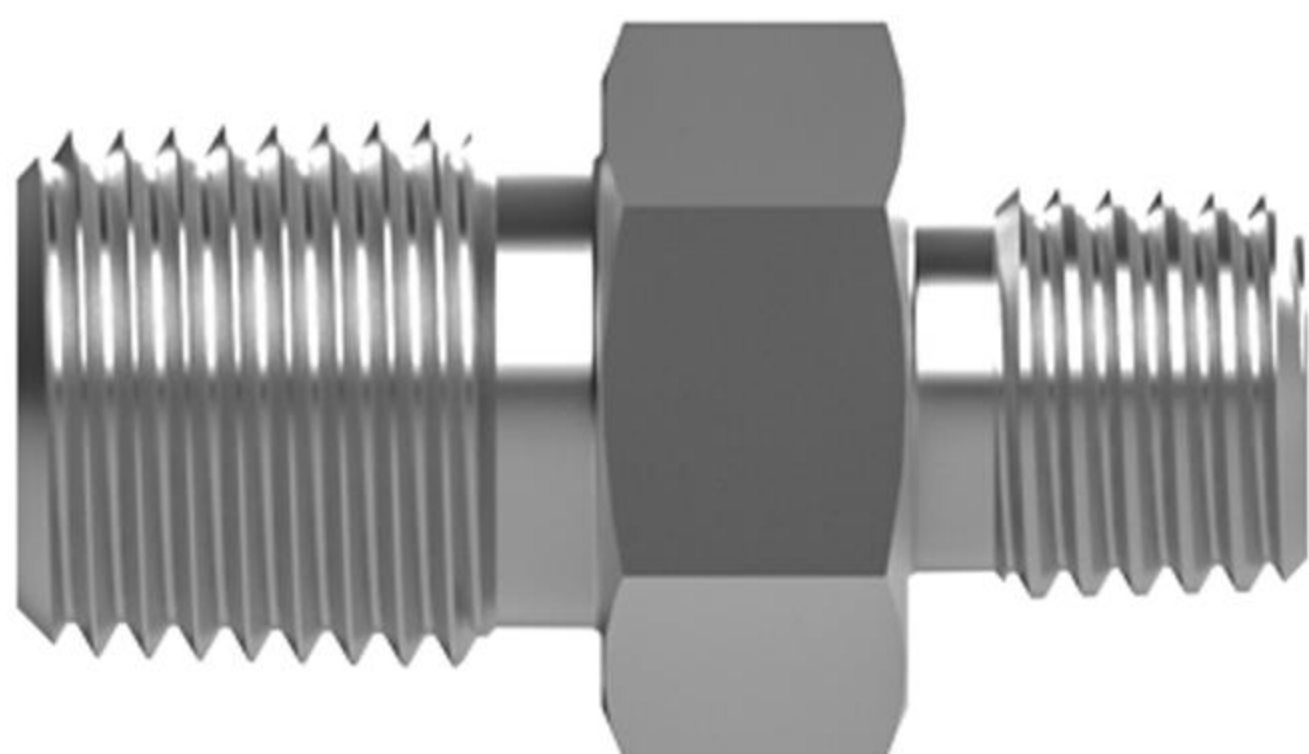
## Brass Reducing Bush



**Size:**

1/2" x 3/8", 1/2" x 3/4", 3/4" x 1",  
1/2" x 1", 1" x 1.1/4", 1" x 1/2"

## Brass HEX Reducing Nipple



**Size:**

1/2" x 3/4", 1/2" x 1", 1" x 3/4",  
1" x 1.1/4", 1.1/4" x 1.1/2", 1.1/2" x 2"

## Brass Elbow



**Female To Male  
Size:**

1/2", 3/4"



**Male To Female  
Size: 1/2", 3/4"**





# Brass Waste Coupling



**ALTECH VALVES**  
HIGH QUALITY



## Product Description:

Altech Brass Waste Couplings are crafted from premium solid brass (CW617N / CW614N), ensuring long-term durability, corrosion resistance, and leak-proof performance in wet and humid environments. Engineered with precision threading and a smooth finish, these couplings provide efficient water discharge and a secure fit for wash basins, sinks, and counters.

Designed for both functional reliability and aesthetic appeal, they resist rust, discoloration, and deformation over time. Ideal for residential, commercial, and hospitality installations, Altech Brass Waste Couplings offer hassle-free installation, easy maintenance, and compatibility with standard plumbing fittings. With strict quality control and superior material integrity, these couplings deliver lasting performance and hygiene protection.

## Material Used:

Body / Flange	: Brass CW617N / CW614N
Threaded Portion	: Brass
Lock Nut	: Brass
Washer	: Rubber / PTFE
Strainer/Grid (if applicable)	: Brass / Stainless Steel

## Types Offered:

Full Thread Waste Coupling, Half Thread Waste Coupling, Plain / Fixed Type, Pop-Up Type,



**Solid Brass Body**



**Popup Drain**



**Premium Finish**

## Sizes / Dimensions:

3", 4", 5", 6", 7"

**Custom sizes on request**



Scan To View More Details Of  
Brass Waste Coupling



# Brass Bib Cock



**ALTECH VALVES**  
HIGH QUALITY



## Product Description:

Altech Brass Waste Couplings are crafted from premium solid brass (CW617N / CW614N), ensuring long-term durability, corrosion resistance, and leak-proof performance in wet and humid environments. Engineered with precision threading and a smooth finish, these couplings provide efficient water discharge and a secure fit for wash basins, sinks, and counters.

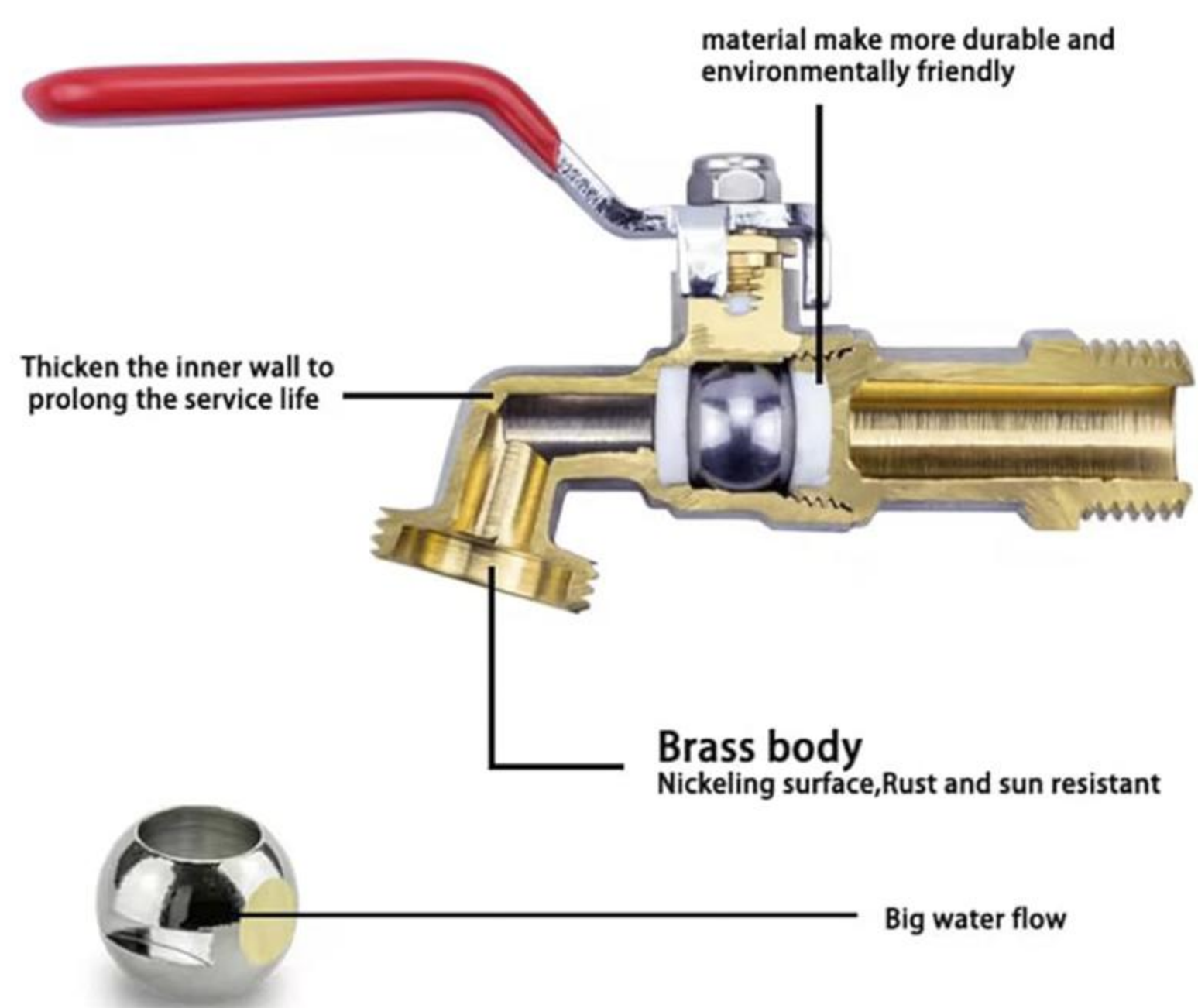
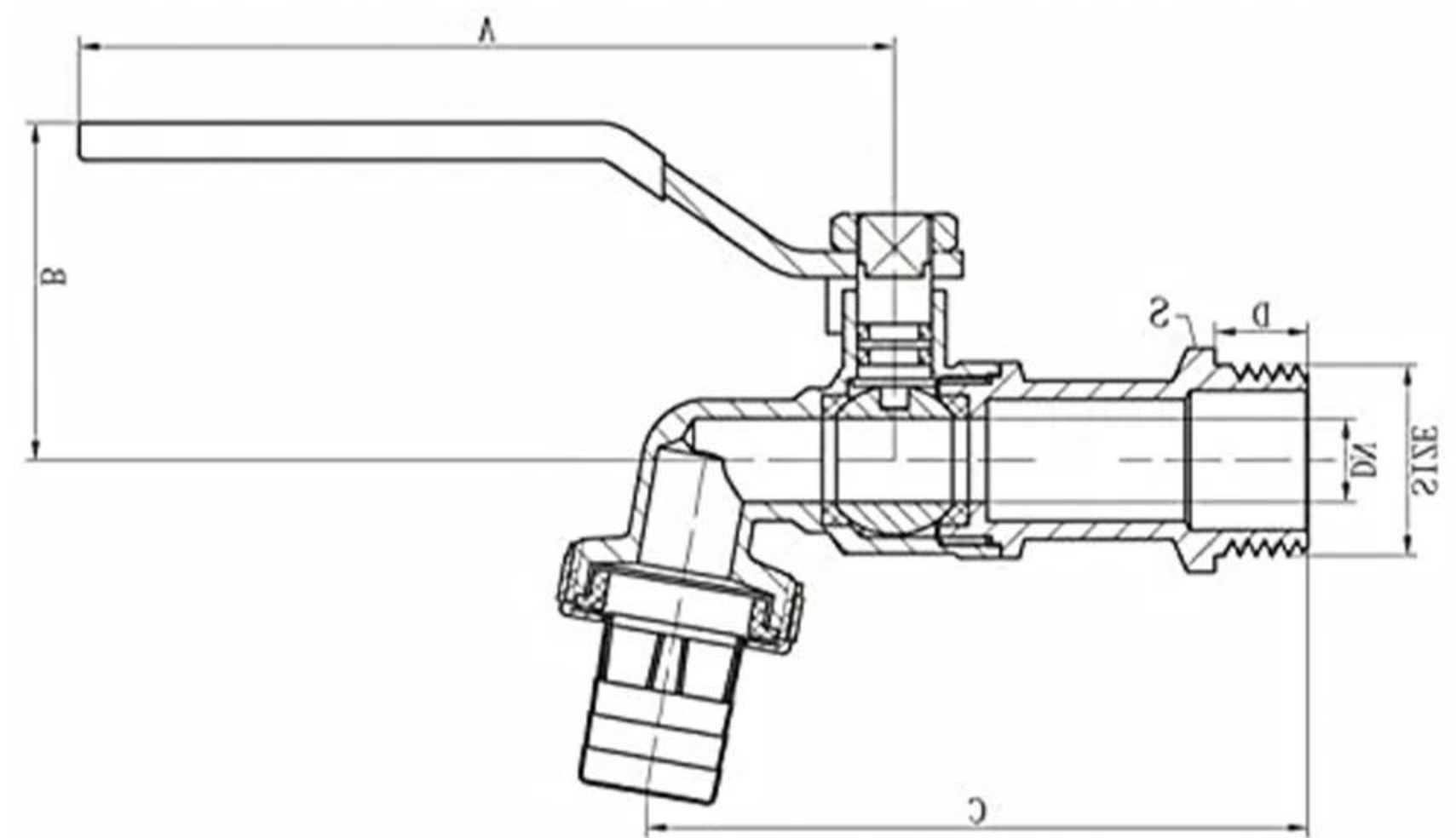
Designed for both functional reliability and aesthetic appeal, they resist rust, discoloration, and deformation over time. Ideal for residential, commercial, and hospitality installations, Altech Brass Waste Couplings offer hassle-free installation, easy maintenance, and compatibility with standard plumbing fittings. With strict quality control and superior material integrity, these couplings deliver lasting performance and hygiene protection.

## Material Used:

Body / Flange	: Brass CW617N / CW614N
Threaded Portion	: Brass
Lock Nut	: Brass
Washer	: Rubber / PTFE
Strainer/Grid (if applicable)	: Brass / Stainless Steel

## Types Offered:

Full Thread Waste Coupling, Half Thread Waste Coupling, Plain / Fixed Type, Pop-Up Type,



## Sizes / Dimensions:

1/2", 3/4"



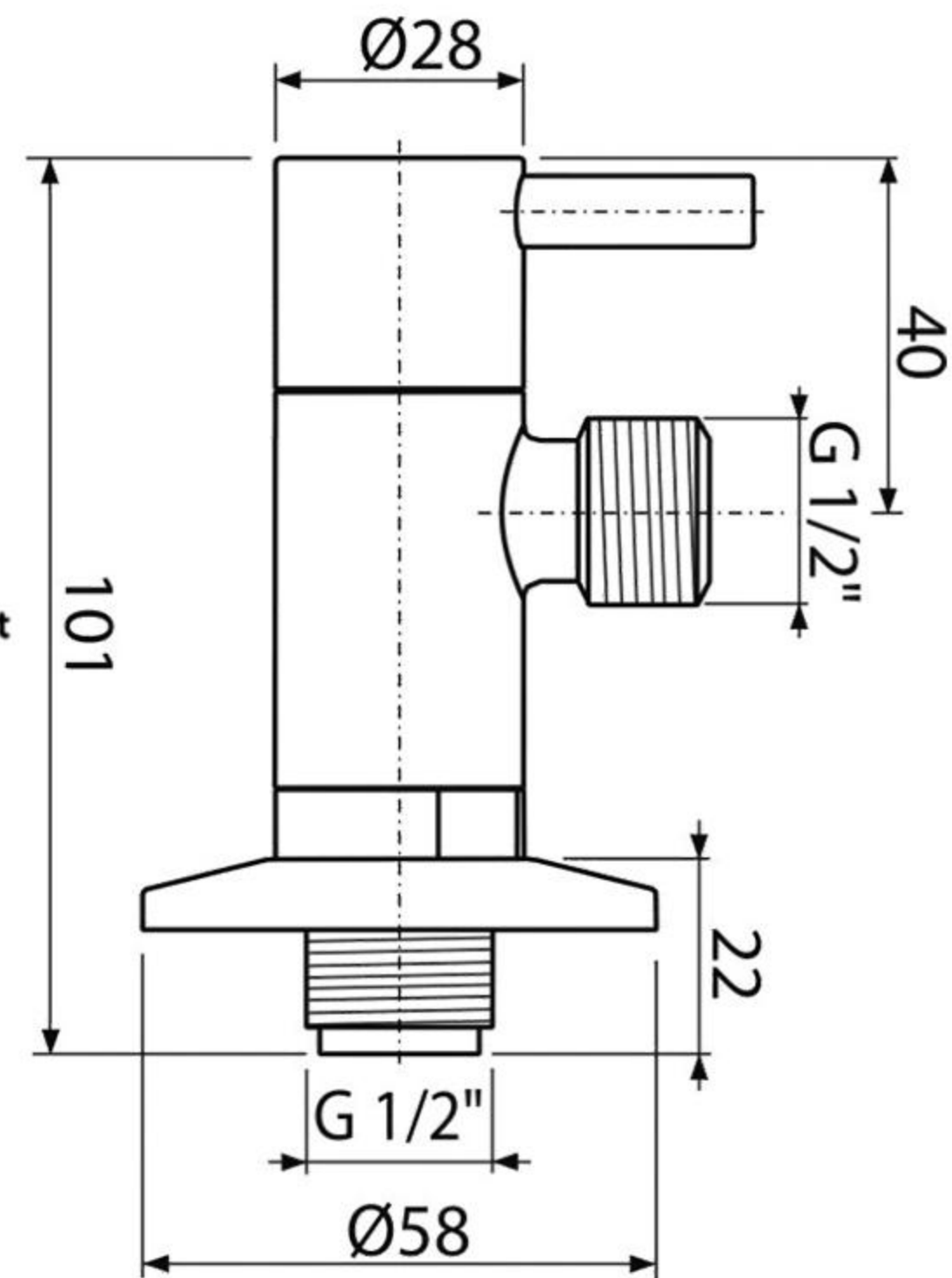
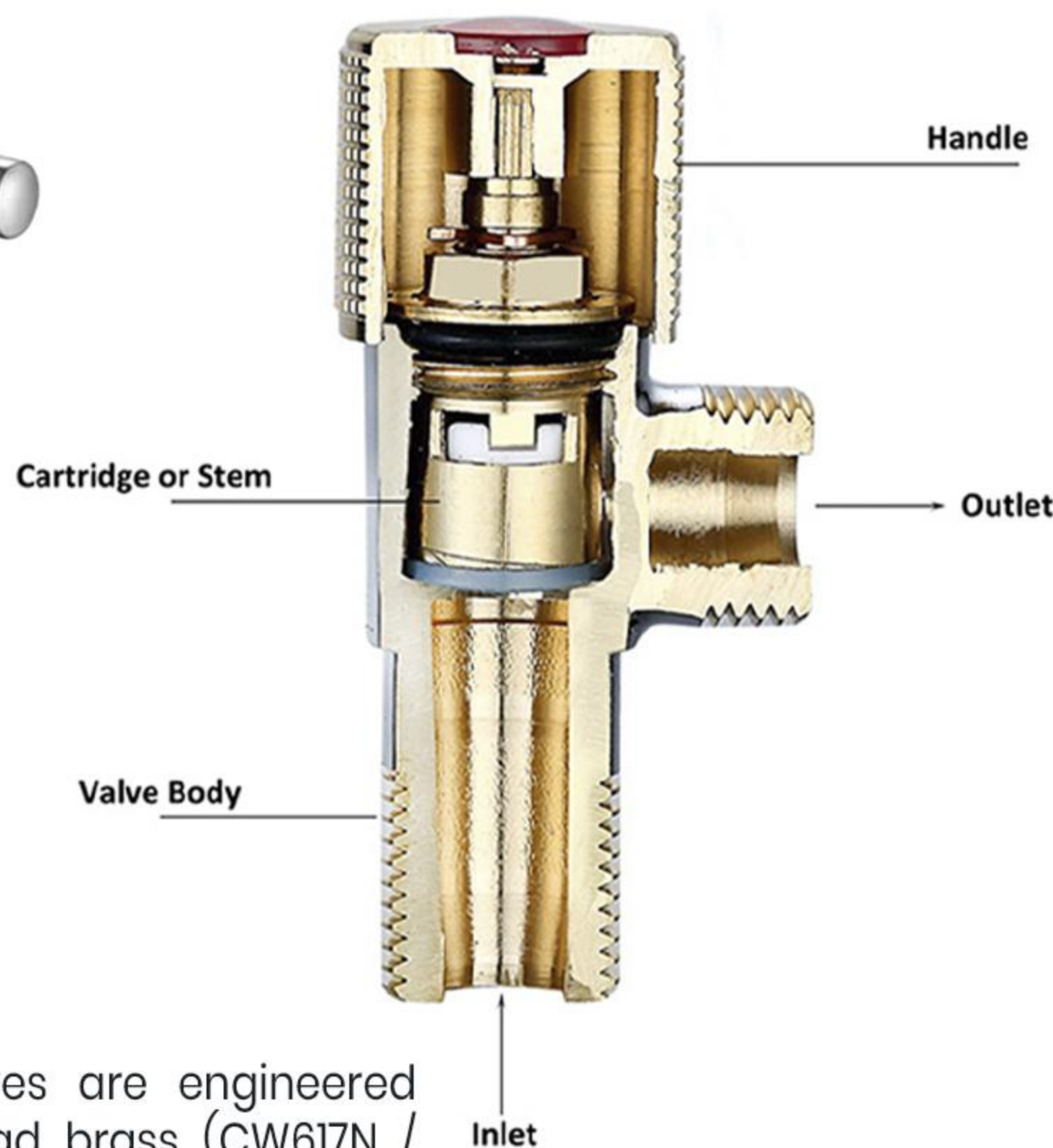
Scan To View More Details Of  
Brass Bib Cock



# Brass Angle Valve



**ALTECH VALVES**  
HIGH QUALITY



## Product Description:

Altech Brass Angle Valves are engineered from high-quality low-lead brass (CW617N / CW614N) to ensure superior strength, corrosion resistance, and long-term performance in water supply systems. Designed at a 90° angle for efficient flow control and space-saving installation, these valves provide smooth operation and leak-proof performance under varying pressure conditions.

Ideal for bathrooms, kitchens, RO systems, geysers, flushing systems, basins, and commercial plumbing networks, Altech Angle Valves are compatible with standard pipe fittings and ensure easy installation and maintenance. With precision threading, high-tensile components, and premium surface finishing, they offer both durability and an elegant appearance.

## Material Used:

Body	: Brass CW617N / CW614N
Spindle	: Brass
Handle / Knob	: Brass / Zinc / ABS / Alloy
Washer / O-Ring	: Rubber / Nitrile / PTFE
Cartridge	: Ceramic / Brass

## Available Finish:

Chrome Plated, Nickel Plated, Natural Brass, Matte / Antique Finish, Customized Coating (as required)



## HIGH QUALITY CARTRIDGE



## Sizes / Dimensions:

1/2", 3/4"



Scan To View More Details Of  
Brass Bib Cock





**ALTECH VALVES**  
HIGH QUALITY



## Altech Valves Industries

Manufacturer and Exporter Of Forged Brass Ball Valve, Gate Valve, Check Valve, Gas Valve, Angle Valve, RO Valve, Non Return Valve, Hex Nipple, Hex Reducing Nipple, Hex , Hex Reducing Bush, Brass Nipple, West coupling

 Plot No. 361, Phase - III, Dared,  
Jamnagar - 361005, Gujarat (India).

 +91 92745 73796  
+91 99254 73796

 [info@altechvalves.com](mailto:info@altechvalves.com)  
[sales@altechvalves.com](mailto:sales@altechvalves.com)

 [www.altechvalves.com](http://www.altechvalves.com)

